




PROMINENCE
ESTATES



RESIDENTIAL
PROPERTY EXPERTS

COVENTRY, WARWICKSHIRE
& LEAMINGTON SPA

STONEY STANTON ROAD,
COVENTRY, CV1 4FT

£1,670 PER MONTH

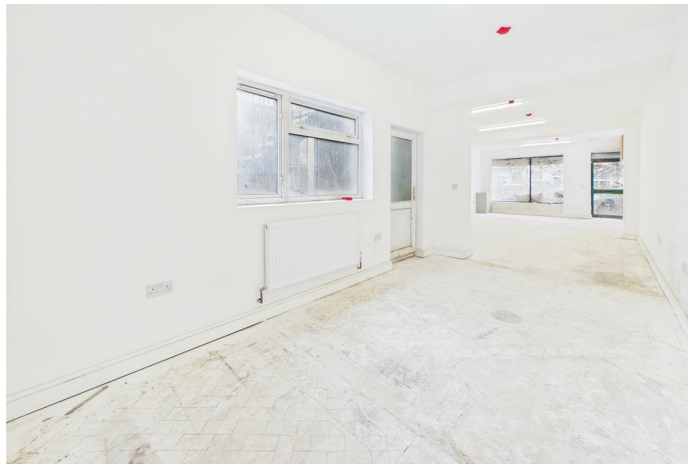
STONEY STANTON ROAD

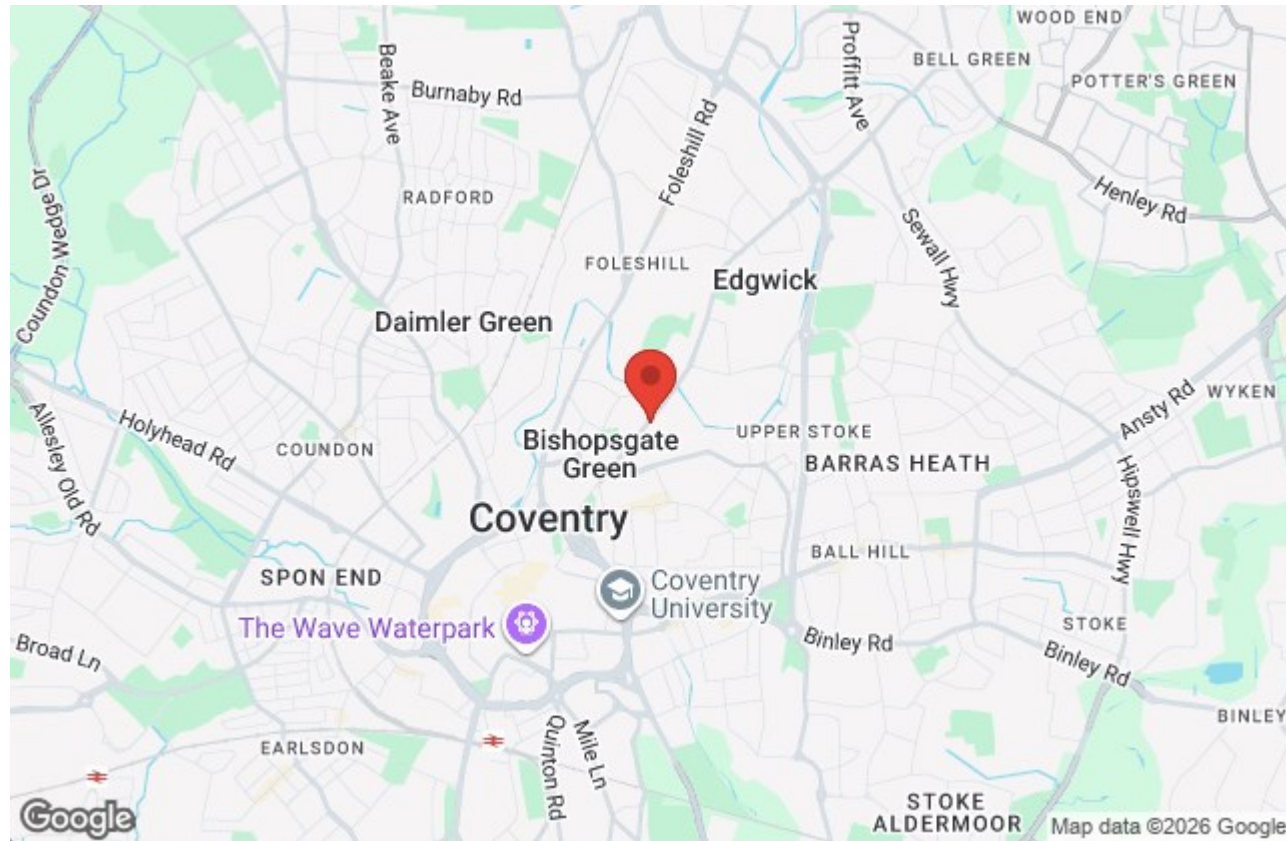


PROMINENCE
ESTATES

This commercial shop located on Stoney Stanton Road, Coventry offers a spacious open-plan layout suitable for a variety of business uses. The property benefits from a large main area, an additional separate room ideal for storage or office use, and a WC facility. To the rear, the property also includes a private back garden area. Conveniently situated in a busy and well-connected location, the premises are available immediately.

To arrange a viewing please call 02476309826





Prominence Estates
5 Queen Isabels Avenue,
Cheylesmore,
Coventry,
CV3 5GE

02476 309 826
lettings@prominenceestates.com
www.prominenceestates.com


PROMINENCE
ESTATES